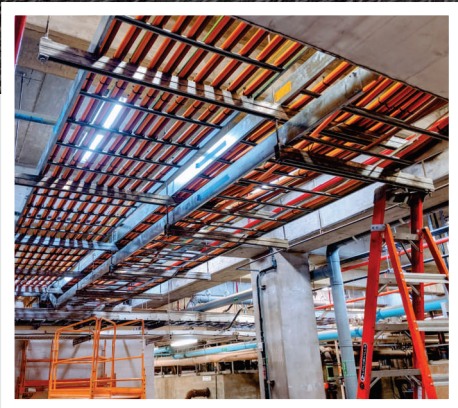


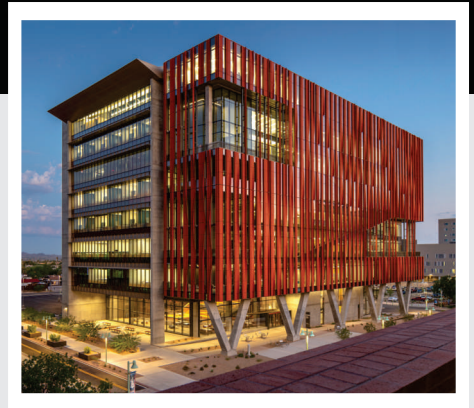
**Let's build something together.**



**QUALITY**



**RELIABILITY**



**INNOVATION**

**INNOVATIVE COLLABORATIVE EMPLOYEE-OWNED**

**For over 50 Years we've had The Power, The People and The Passion**



# DELIVERING HIGH STANDARDS AND ATTENTION TO DETAIL FOR ANY SIZE PROJECT

## We are more than an Electrical Contractor. We're Your Partner.

Wilson Electric is an award-winning electrical contractor with a passion for results. With the power to perform, we have been serving the Southwest since 1968. As one of the most trusted electrical contractors, we approach each project as a business partner and work within your requirements, not ours.

We have a long history of using innovation to make our work better, faster and more efficient, never compromising on safety or quality. Client focused, we build projects in a collaborative environment - We are wired for success.

## BY THE NUMBERS

- 1968 Founding Year
- 750+ Number of Employees
- 0.55 2022 EMR
- 7 Number of Offices
- 21 Number of times we've been ranked #1
- 2005 Became Employee-Owners

## WILSON ELECTRIC SERVICES CORP.

## IS MADE UP OF TWO COMPANIES OFFERING CLIENTS A SINGLE SOURCE FOR TOTAL FACILITY SOLUTIONS.

**Wilson Electric** is a comprehensive design-build, design-assist, electrical subcontractor that specializes in renovation and new construction projects for both the public and private sectors. We can help with any size project, from the smallest service call to the largest complete electrical and special systems project. With experience in nearly every market sector and a diverse range of clients, our team has the capability to improve existing systems and execute any electrical design.

**NETSIAN Technologies Group** integrates full scope low-voltage electrical systems to interact as one highly complex master system: fire alarm, access control, security, IP video solutions, building automation, telecommunications, audio visual and network cabling. In partnership with vertical construction team, NETSIAN provides innovative design solutions for your new construction or tenant improvement project to mitigate risk and ultimately save money.





We have had the honor of building some of the Southwest's most notable facilities. We have a rich history of constructing, remodeling and retrofitting facilities for a diverse array of clients in a wide-range of industries. Our projects represent many building types demonstrating the magnitude of our capabilities in electrical construction.

# Markets

You Know Our Work

## AIRPORT

- Phoenix Sky Harbor International Airport:**  
 Phoenix Sky Train Phase I & II  
 Phoenix Sky Train Stage II  
 Terminal 4 Renovations  
 Premise Distribution System  
 Baggage Area Renovation  
 Southwest Airlines  
 Operation Hanger

- Salt Lake City International Airport:**  
 Low Voltage Raceways  
 Concourse E

- Tucson International Airport:**  
 Concourse Renovation  
 Terminal Expansion

## COMMERCIAL OFFICE

- American Express  
 Scottsdale Quarters  
 McKesson Chaparral  
 ADP Office  
 Federal Reserve Bank Utah  
 Scottsdale Quarters  
 Marina Height Building C  
 American Family Insurance  
 Tucson Electric Power  
 Northrop Grumman Division HQ

## CORRECTIONS/ CRIMINAL JUSTICE

- Red Rock Correctional Facility  
 Maricopa County 4th Ave. Jail  
 SRPMIC Detention Center  
 Pima County Court Complex  
 Mesa Courts Building  
 Taos County Judicial Complex  
 San Carlos Detention Center  
 Utah State Prison  
 Lea County Judicial Complex

## DATA CENTERS

- Go Daddy  
 Phoenix NAP  
 Progressive Casualty Insurance  
 Fry Road Data Center  
 Countrywide Home Loan  
 PayPal  
 State Farm Data Center  
 Americredit Service Center  
 CVS Data Center

## EDUCATION

- ASU, ISTB-1 and ASU- ISTB-4  
 ASU BioDesign C  
 ASU Barrett Honors College  
 ASU Polytechnic Campus  
 UA, Law Commons  
 UA, ENR II  
 UA Bioscience Research Laboratories  
 UA Health Science Innovation Bldg.  
 UA College of Pharmacy  
 UA Student Success District  
 University of Utah  
 Albuquerque Public Schools

## HEALTHCARE

- Mayo Clinic Proton Beam Therapy  
 Mayo Clinic PCAP  
 Tucson Medical Center,  
 West Wing Hospital Addition  
 Banner Ironwood Hospital  
 BDP Kindred Healthcare  
 Banner Estrella Medical Center  
 Verde Valley Medical Center  
 Phoenix Children's Hospital, 9th Flr  
 Oasis Hospital  
 IHC Saratoga Springs  
 Neurobiology Research Facility  
 Dignity Health Chandler  
 Sierra Vista Medical Center  
 TMC Rincon Hospital

## HIGH-RISE RESIDENTIAL

- 44 Monroe  
 Union Tempe  
 Summit at Copper Square  
 Residence at 2211 Camelback

## HOSPITALITY/ ENTERTAINMENT

- Hilton Canopy  
 Ritz Carlton at Dove Mountain  
 Starr Pass Marriott  
 Scottsdale Princess  
 Ak-Chin Casino  
 Carlsbad Caverns  
 Top Golf  
 Eddy Hotel

## INDUSTRIAL

- FMI Sierrita Mines  
 FMI Morenci Mines Moly Plant  
 ME Electrical Substation  
 Dunn Edwards  
 SubZero Manufacturing  
 L-3 Communications  
 Leclerc Foods

## MILITARY

- Kirtland Air Force Base  
 Ft. Huachuca  
 Luke Air Force Base  
 Sandia National Laboratory,  
 MESA Micro Fab  
 Arizona Air National Guard  
 Davis Monthan Air Force Base  
 Hill Air Force Base



## SPORTS COMPLEX

- Oakland A's Stadium  
 Camelback Ranch  
 Chase Field  
 Keams Athlete & Training  
 Event Center  
 Tumbleweed Park, Recreation  
 Center  
 Footprint Center Renovation  
 Phoenix Suns Training Facility

## WATER/WASTEWATER

- CAP Water Treatment Plant  
 Greenfield WRF Plant  
 New Castle Pumping Station  
 Scottsdale Thomas GWF  
 Wilcox Water Treatment  
 Val Vista Water Treatment  
 Chaparral WTP  
 Mesa Water Treatment Plant  
 Gilbert North NTP  
 Luke 303 Phase I  
 24th St. Redundancy WTP  
 Fountain Hill Headworks



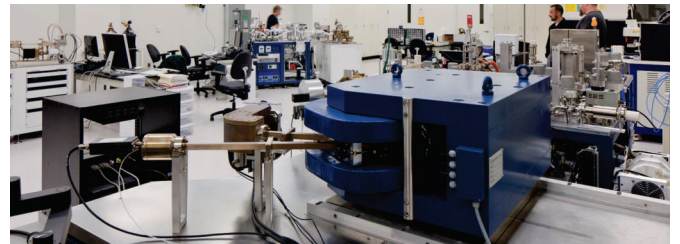
# OUR PHILOSOPHY

At Wilson Electric Services Corp. we are driven everyday by one simple fact: Relationships are among the most important things we build. We have built a reputation for customer service, reliability and cost effectiveness. Our culture of mutual respect, integrity, and open communication is not just a project management approach, it is our operational philosophy.

In 2005, the company created an Employee Stock Purchase Plan (ESOP). We are proud to be employee-owned, each of us has a personal stake in what is delivered to our customers.

We are motivated and empowered to deliver the best value and service. The longevity of our employees-owners is the key to our success; the average tenure of our foremen is over 13 years.

Financially stable with no debt, we can draw upon a pool of over 700 employees, supervisors, field and technical staff. We have proven management system, noteworthy financial stability, advantageous buying power along with a business approach based on respect, cooperation, flexibility and quality.



**WE THRIVE IN A COLLABORATIVE ENVIRONMENT**



Our Lean journey involves every team member on our projects to help improve our processes, seek ways to drive efficiencies in the way we build, and enhance the value of the facilities we create. This journey challenges Wilson Electric team members to utilize their entrepreneurial skills and innovation to support our mission to create an exceptional customer experience. We are committed to reducing waste and optimizing efficiency through all phases of design, fabrication and construction.

## SERVICES

Wilson Electric Services Corp. is organized to provide continuous services to our clients. From design and preconstruction to construction and service. What sets us apart from the competition is our ability to provide a complete integration of electrical and specialty systems packages. We provide the most cost efficient systems. It is this innovative approach to business and commitment to our customers that has made us the Southwest's premier, single-source provider of total facilities solutions.

**SINGLE-SOURCE  
PROVIDER OF  
TOTAL  
FACILITIES  
SOLUTIONS**

### DESIGN BUILD

Our preconstruction team is skilled in integrating conceptual design with functional performance to maximize your return on investment. Our method of value engineering not only has proven benefits in cost and quality, but also eliminates time wasted in the design process and errors in communication between multiple parties. We promote an effective collaborative process among general contractors, owners, engineers and subcontractors. We have the ability to assist before and during the design development phase, as well as with the project budgeting in the conceptual stage. We can reduce construction schedule delays by coordinating codes and trades.

### SERVICE

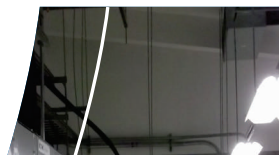
Our service team specializes in maintaining and upgrading facilities. Power problems seem to happen at the worst possible times. When these issues arise, you need a company with the expertise and knowledge to locate and repair the problem quickly. With our 24/7 rapid response service program, we can save you money by reducing downtime, maintaining existing equipment and increasing equipment longevity. We help you adapt to your ever-changing power needs using the most current technology, including thermography to identify potential electrical equipment issues.

### PREFABRICATION

Prefabrication is a tremendous tool for increasing productivity and can be done in a controlled environment at our prefabrication facility. These preassembled products allow us to meet owner project schedules, control jobsite waste and improve overall project quality.

### BIM

Our VDC/BIM staff has tremendous experience in 3D modeling, including numerous projects utilizing Trimble Total Station integration. For years, Wilson Electric Services Corp. has utilized three-dimensional modeling on every large project to enhance trade collaboration and improve the efficiency of our project delivery process. This valuable communication tool is used to manage everything from shop drawings to developing multi-trade overlays.





## COMMITMENT TO SAFETY

The elimination of accidents is a corporate responsibility that we all share. Though our operational activities are diverse, one common thread that binds us all together is the need to provide a safe place for our employees to work.

Nothing we do is more important than helping to ensure that our employees return home safely every night. Above all, we are committed to promoting the safest possible working environment for our people and our customers.

The company's total commitment to safety includes mandatory drug testing, employee safety orientation, safety training, weekly safety meetings, stretch & flex, accountability, goal setting, a dedicated safety manager and staff as well as a safety committee. It is our ultimate goal to lead the industry in safety performance. Achieving this goal not only benefits the company, but our employees, our customers and our business partners. Aside from the obvious moral issue, an effective safety, health and environmental program is simply good business.

Wilson Electric has earned ADOSH's coveted Voluntary Protection Program (VPP) STAR Status. Companies who are awarded the STAR designation demonstrate exemplary and comprehensive, safety and health management systems. VPP is the Occupational Safety and Health Administration's highest program of recognition across all United States OSHA organizations.



## THE ENVIRONMENT

*We are committed to the environment - from our design to our operational practices.*

Wilson Electric Services Corp. is committed to sustainable building and preserving the environment, and therefore makes every effort to employ green building techniques in our construction projects. Building "green" is an opportunity to use our resources efficiently while creating healthier buildings that improve human health, build a better environment, and provide cost savings.





## TO SERVE OUR CLIENTS

We are headquartered in Tempe, Arizona and have branch offices in Prescott, Sierra Vista, Tucson, Boise, Idaho, Albuquerque, New Mexico and Salt Lake City, Utah.

### TEMPE

480-505-6600  
600 E. Gilbert Drive  
Tempe, AZ 85281

### PRESCOTT

928-778-7212  
550 S Montezuma St  
Suite D  
Prescott, AZ 86303

### SIERRA VISTA

520-452-0977  
4576 N. Commerce Drive  
Sierra Vista, AZ 85635

### TUCSON

520-792-3138  
2020 E. Beverly Drive  
Tucson, AZ 85719

### ALBUQUERQUE

505-271-8773  
501 General Somervell St SE  
Suite B  
Albuquerque, NM 87123

### BOISE, IDAHO

208-817-6028  
149 S. Adkins Way, #102  
Meridian, ID 83642

### SALT LAKE CITY

801-908-6660  
905 N. Main Street, # C-3  
North Salt Lake, UT 84054

 **NETSIAN**  
TECHNOLOGIES GROUP  
**WILSON ELECTRIC SERVICES CORP.**

[WWW.WILSONELECTRIC.NET](http://WWW.WILSONELECTRIC.NET)

[WWW.NETSIAN.NET](http://WWW.NETSIAN.NET)

THE MOST  
IMPORTANT  
THING WE  
BUILD ARE  
RELATIONSHIPS